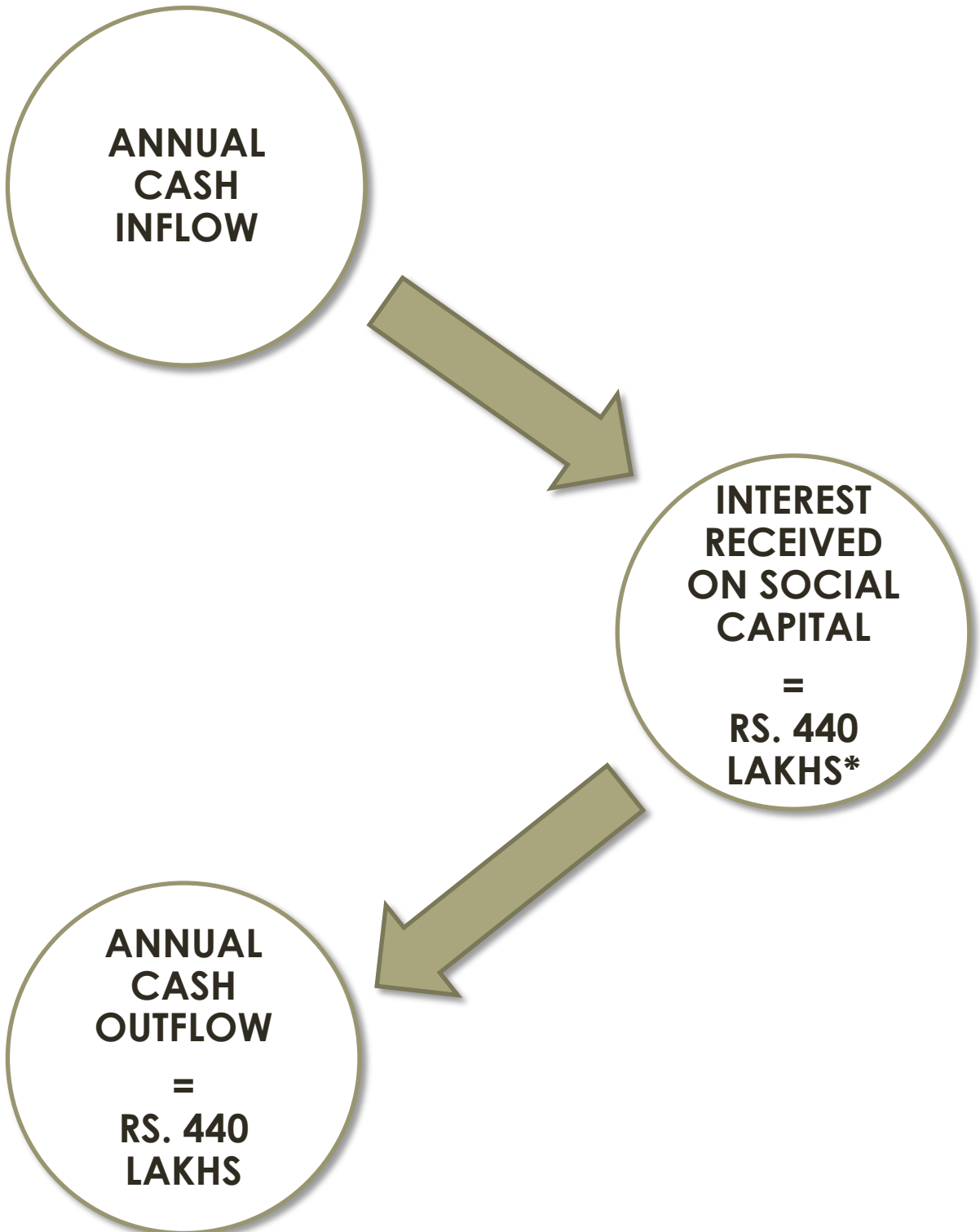




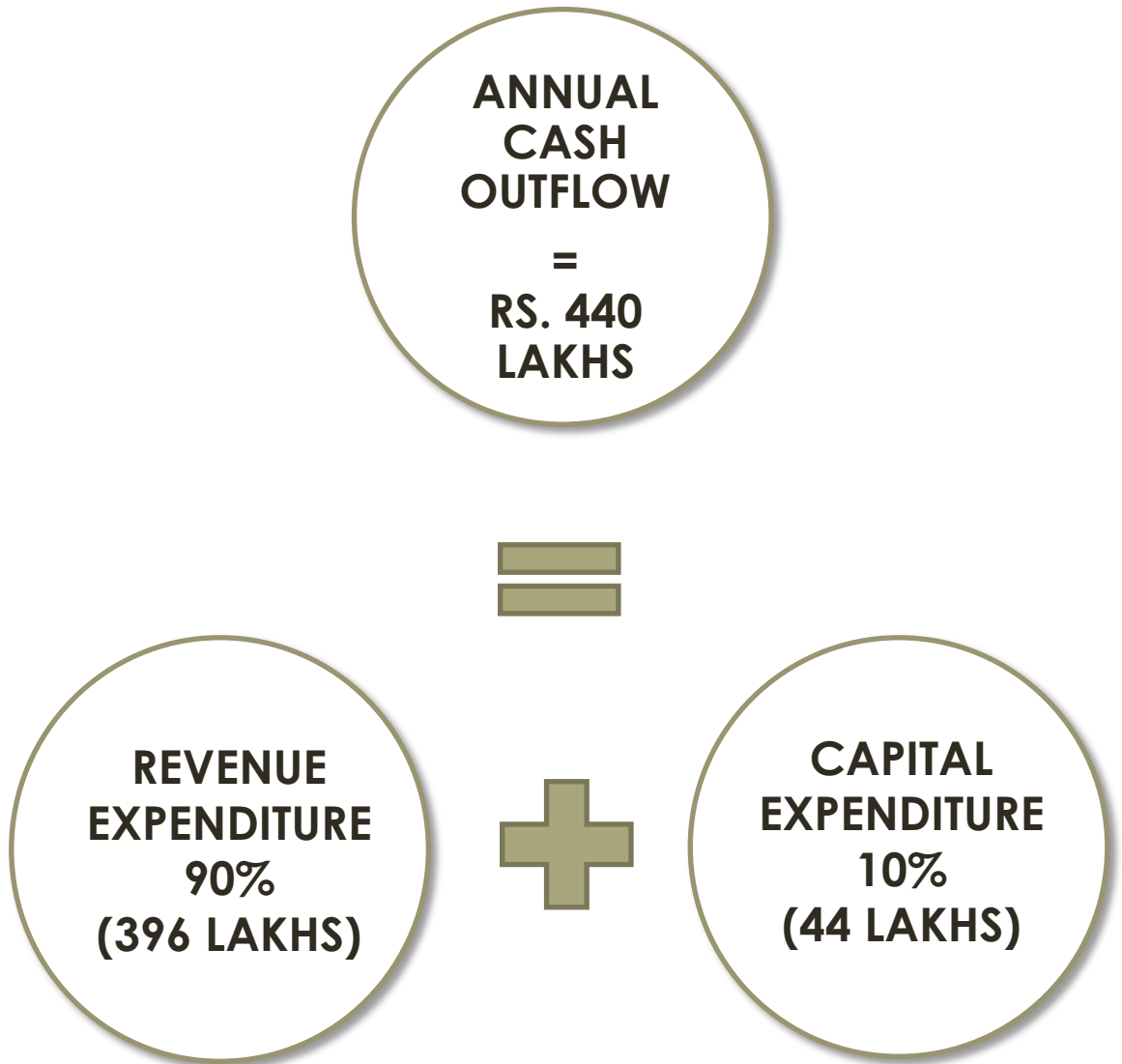
**DIAGRAMMATIC REPRESENTATION
OF
CASHFLOW
FOR
UTILIZATION OF INTEREST RECEIVED ON
SOCIAL CAPITAL**

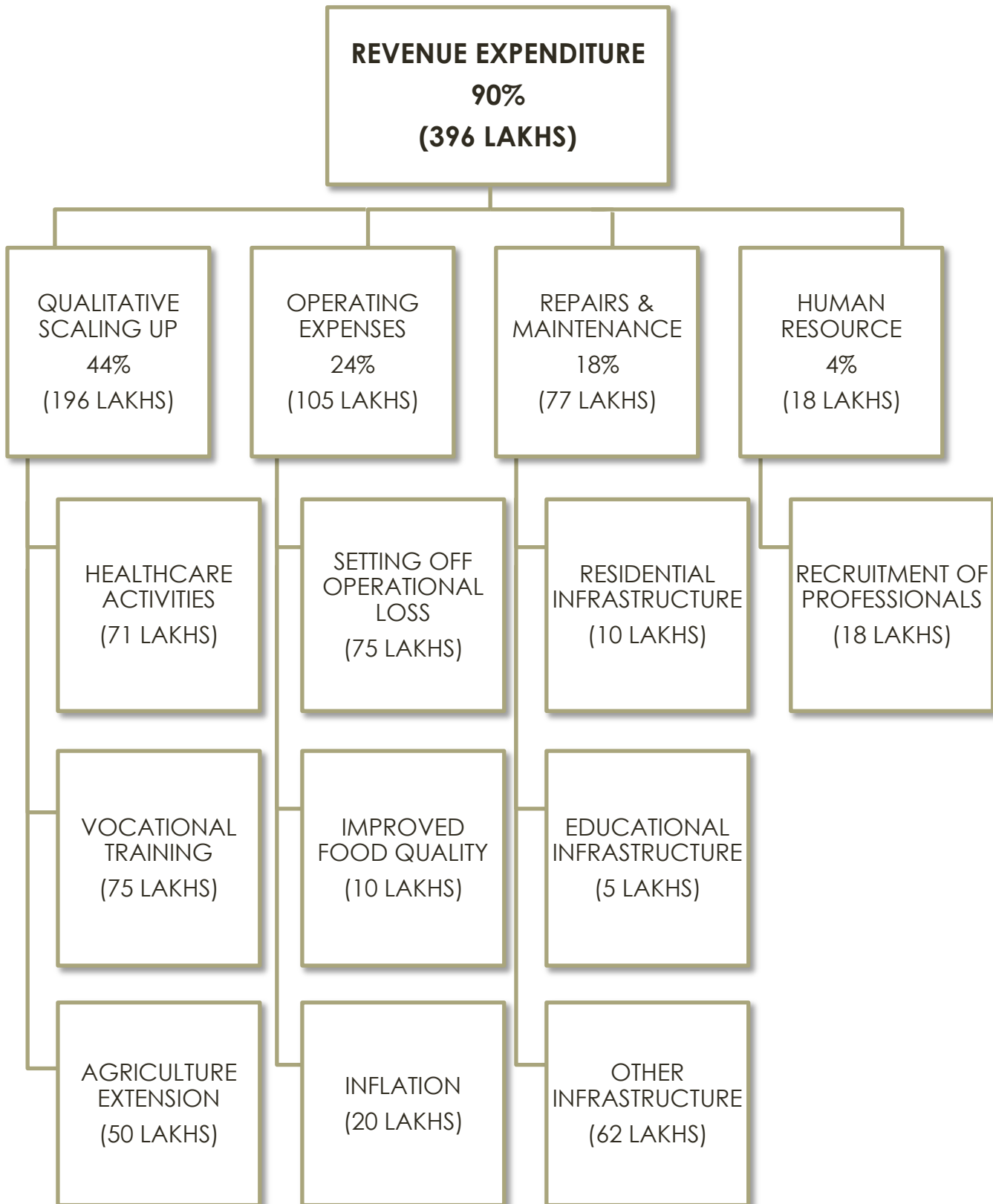
Maharogi Sewa Samiti, Warora

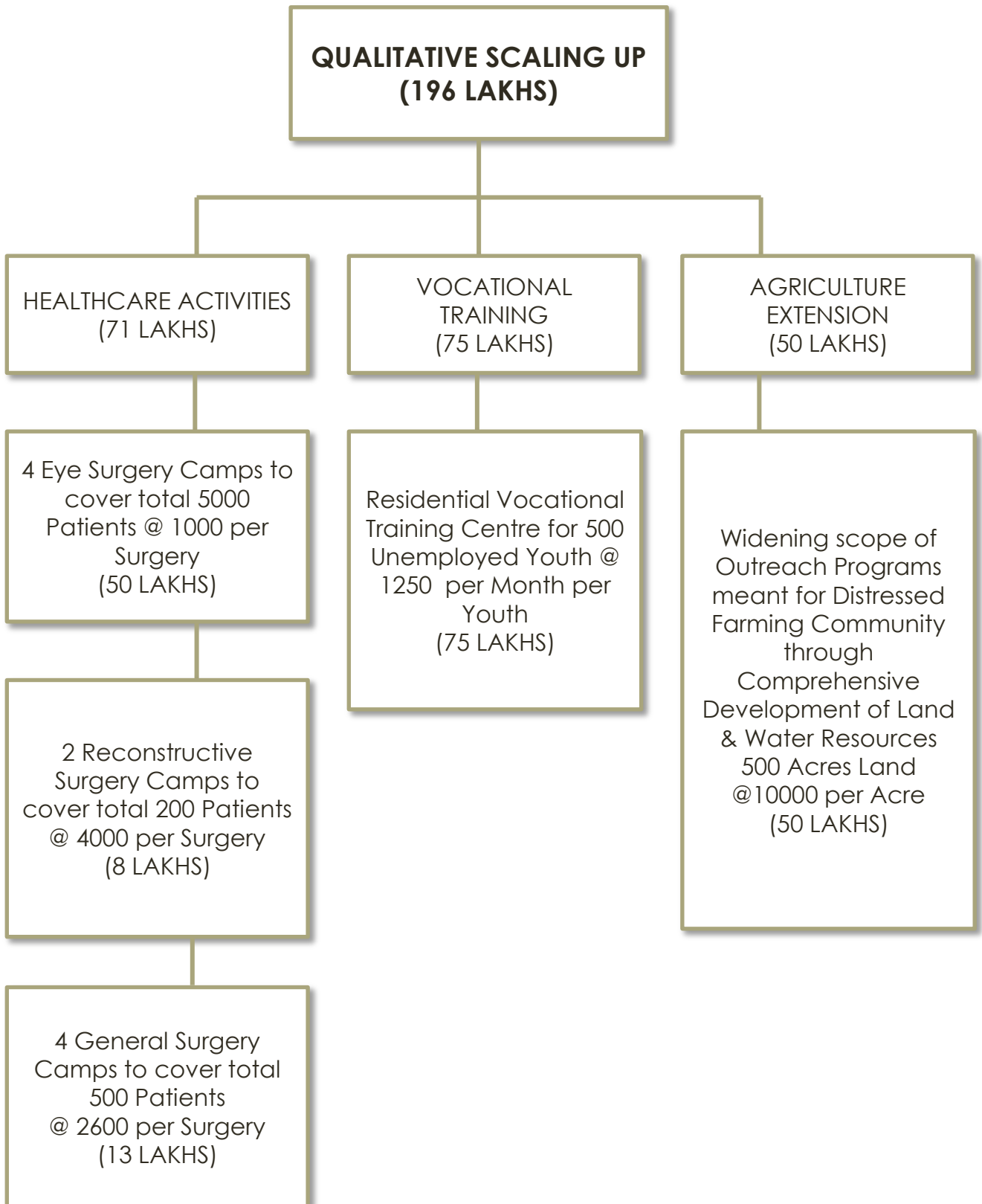
At-Post: Anandwan, Tahsil: Warora, District: Chandrapur, Pin: 442914, Maharashtra State
Tel: (07176) 282034 Fax: (07176) 282134 Mobile: 9922550006, 9822465834
Email: anandwan@gmail.com, info@anandwan.in
Website URL: <http://www.anandwan.in>

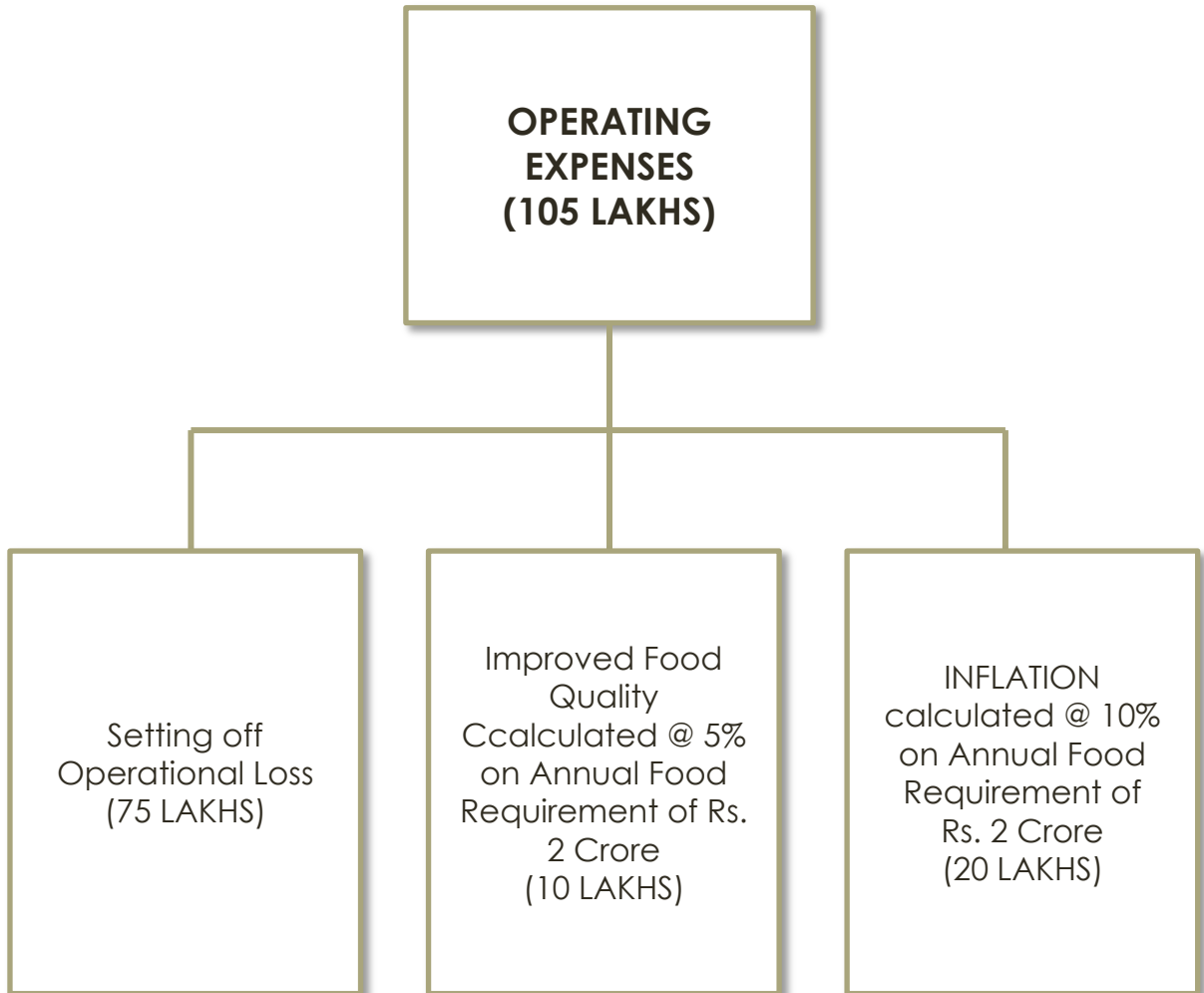


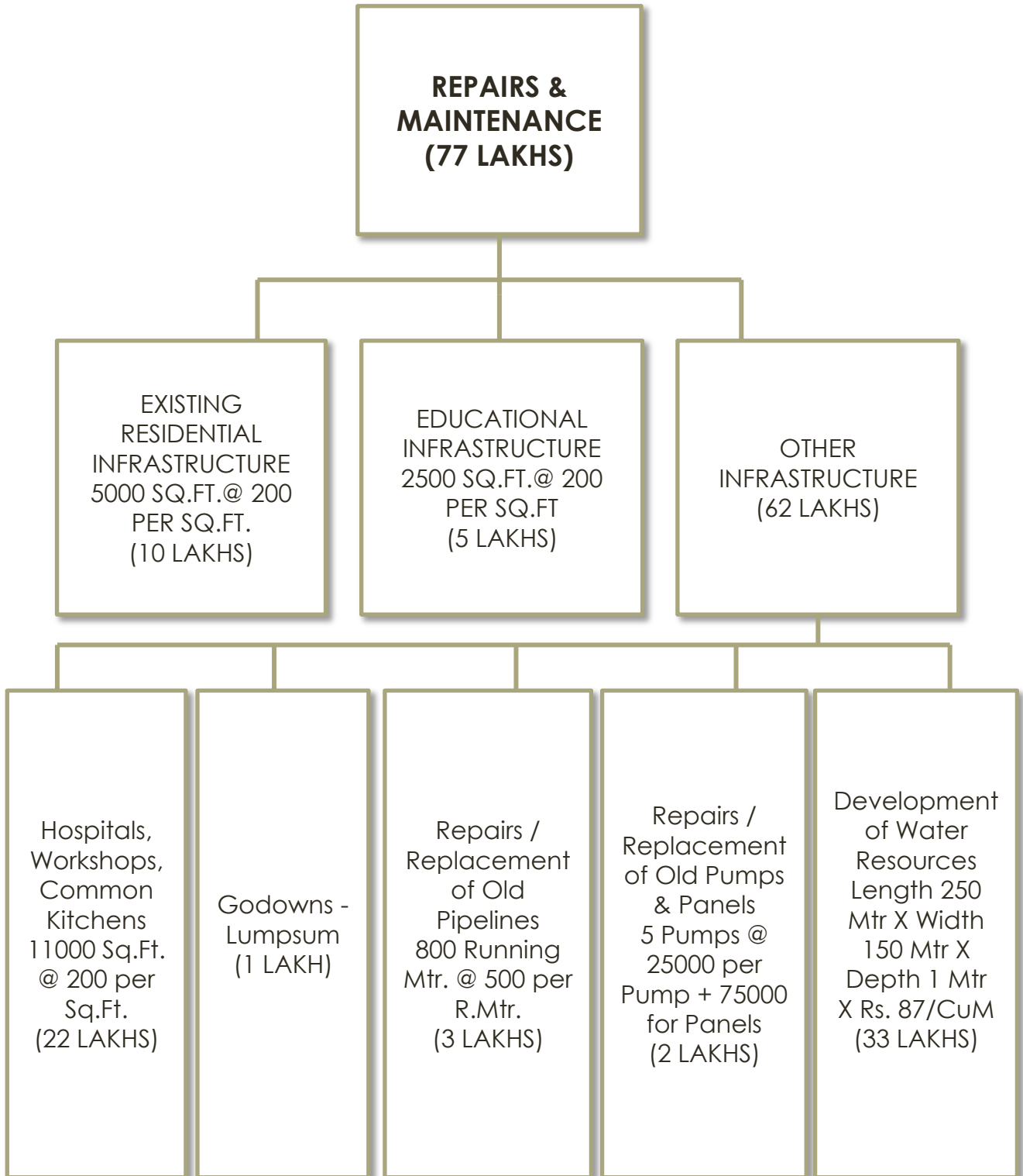
* Calculated @ 8% on Social Capital of Rs. 55 Crores proposed to be raised





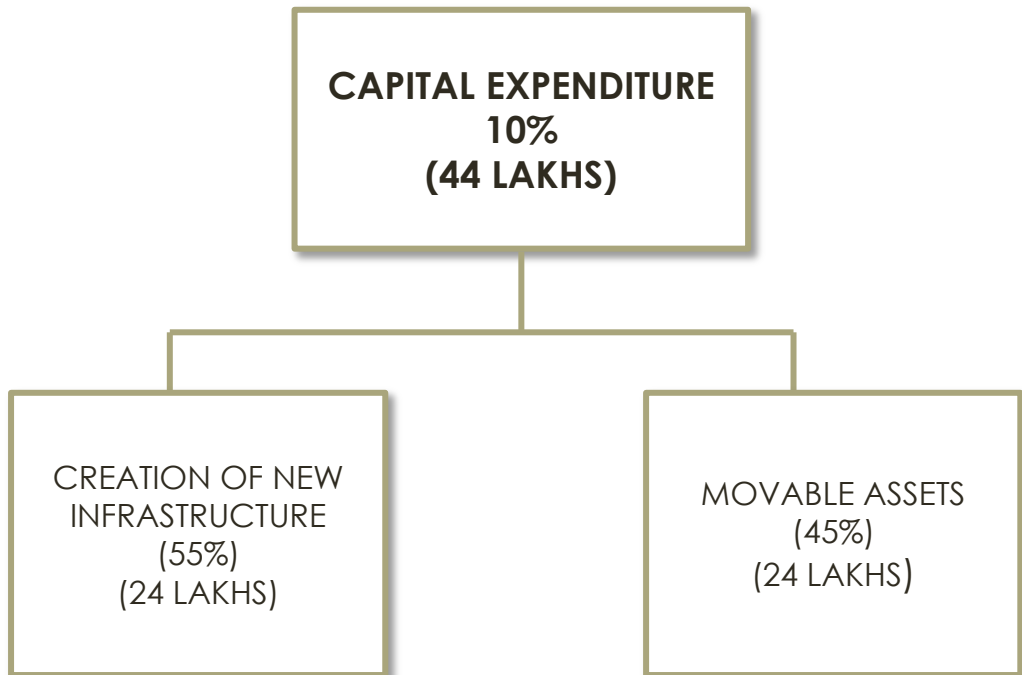






**HUMAN RESOURCE
(18 LAKHS)**

RECRUITMENT & RETENTION OF
10 SKILLED PERSONNEL
(DOCTORS, CIVIL ENGINEER,
AGRICULTURISTS, ETC.)
(18 LAKHS)



**CREATION OF NEW
INFRASTRUCTURE
(24 LAKHS)**

Creation of other
infrastructure like Approach
Roads, Fencing, Sewage
Canals, Sheds for Various
Purposes - Lumpsum
(24 LAKHS)

**MOVABLE ASSETS
(20 LAKHS)**

Procurement of Movable
Assets like Earth Movers,
Tractors & Implements etc.
(20 LAKHS)