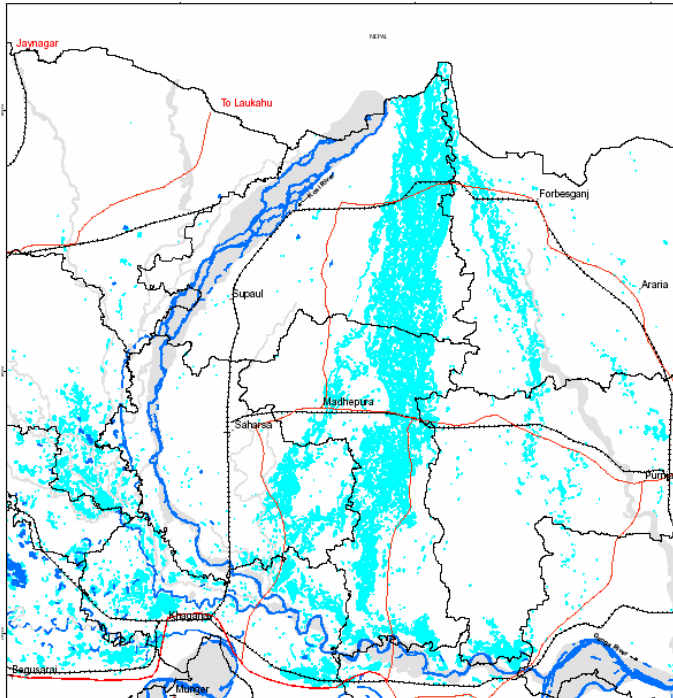


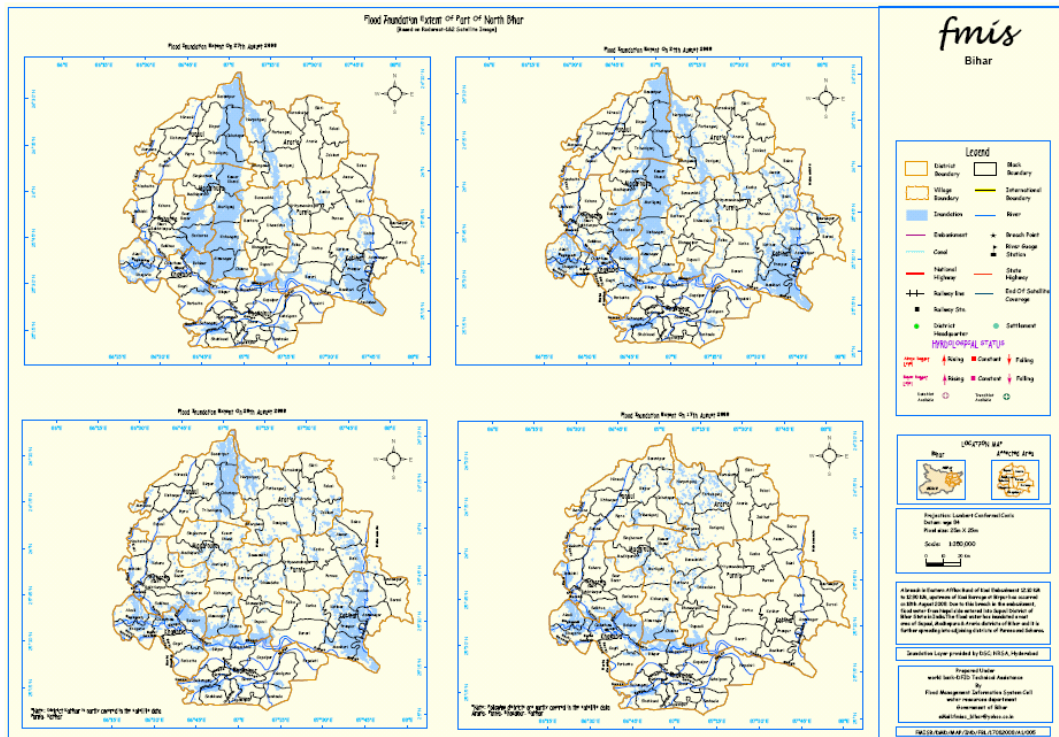
# Brief BIHAR FLOODS (Kosi Region)

Flood Inundated areas in part of Bihar state  
Based on the analysis of Radarsat data of 24-August-2008

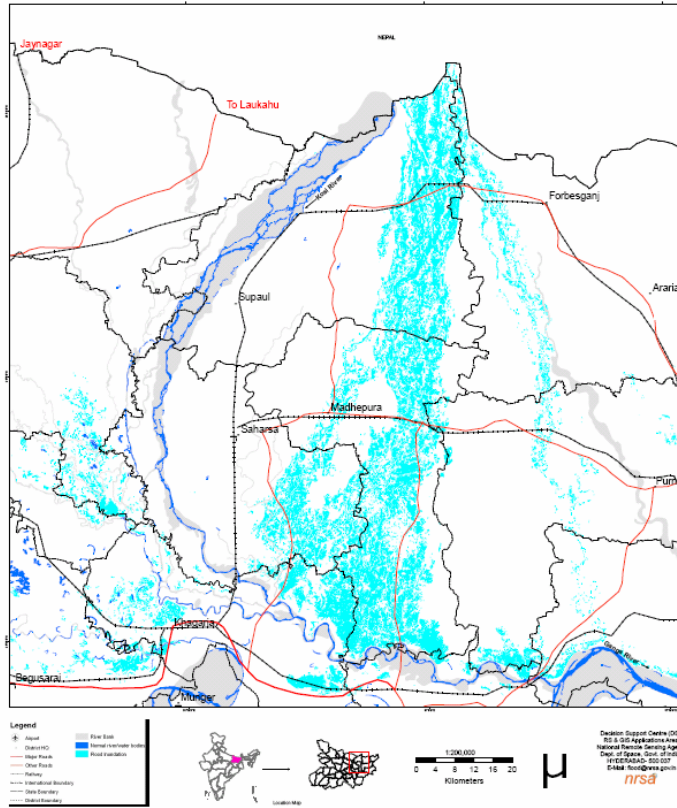


The Kosi River eroded its embankment in Nepal about 12 K.M. up stream of the barrage as a result of which the embankment breached on the 18<sup>th</sup> of August 2008 and the river started flowing on an entirely new course. The water spread along the new course is 15 K.M. wide and is heading straight down south. More than 25 lac people and their houses fall in the path of the new course. The people along the new course have taken shelter on whatever high ground they could find and on roof tops.

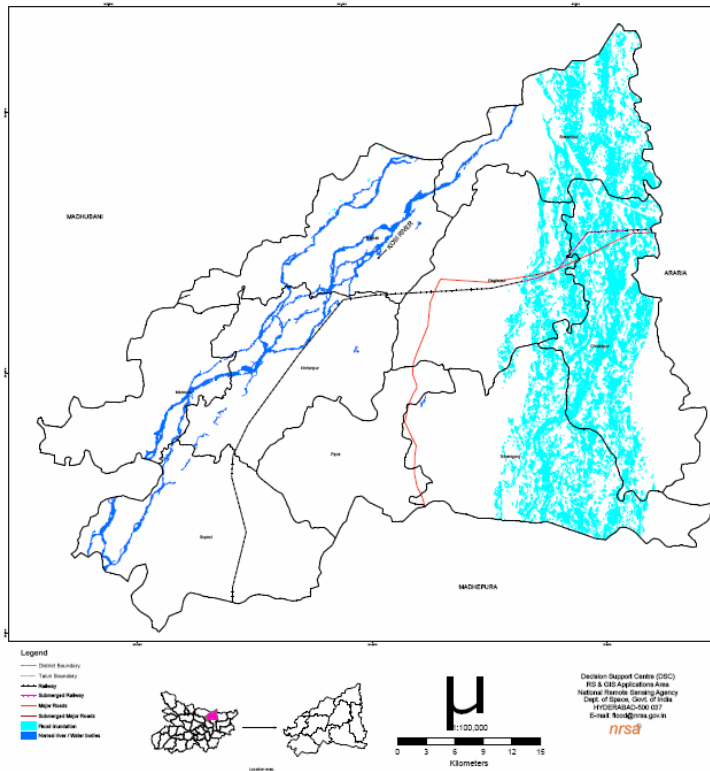
## IMPORTANT FLOOD INUNDATION MAPS



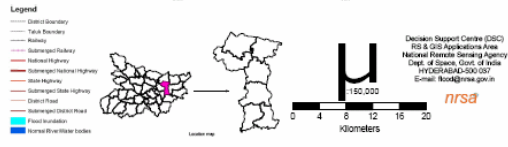
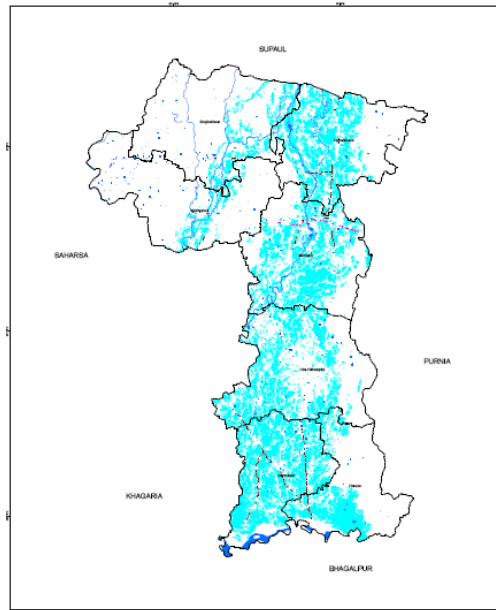
Flood Inundated areas in part of Bihar state  
Based on the analysis of Radarsat-2 data of 27-August-2008



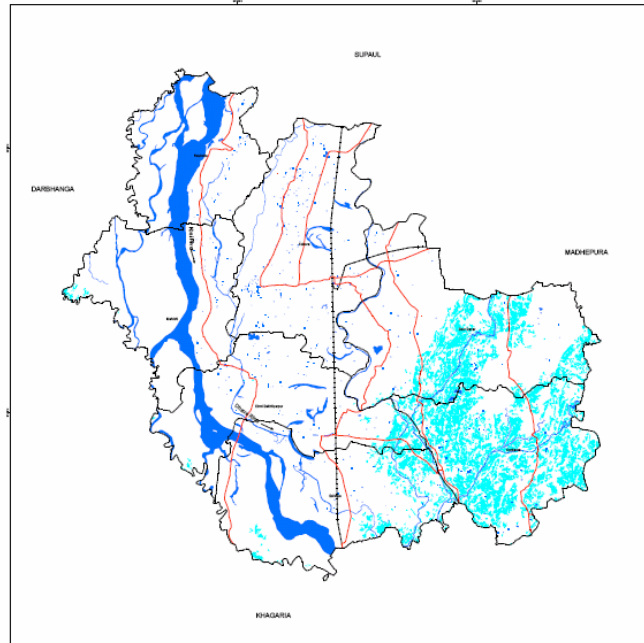
Flood Inundated Areas in Supaul District, Bihar  
Based on the analysis of Radarsat-2 data of 27-August-2008



Flood Inundated Areas in Madhepura District, Bihar  
Based on the analysis of Radarsat-2 data of 27-August-2008



Flood Inundated Areas in Saharsa District, Bihar  
Based on the analysis of Radarsat-2 data of 27-August-2008



For Contact State Control Room (Bihar) :- 91- 612 - 2217305/ 2215027/ 6452572  
**Note:- For Donation:- C.M. Relief Fund, Bihar**